

# Creating an Open Shelf Vanity

---

Reference Number: **KB-03200**

Last Modified: **December 9, 2024**

---

The information in this article applies to:



## QUESTION




I would like to create an open shelf vanity that I can customize and reuse for future designs. Can this be done in Chief Architect?



# ANSWER

You can use a base cabinet to create custom vanities that can then be saved to your User Library for future use in other projects. Some designs may require no sides or back to the cabinet, which can be done in Chief Architect Premier.

## To prepare your cabinet for an open shelf vanity design

1. To first place the cabinet go to **Build> Cabinet> Base Cabinet**  from the menu, then click in the plan to place your cabinet.
2. Using the **Select Objects**  tool, select your cabinet and use the **Open Object**  edit tool to open its specification.
3. In the **Base Cabinet Specification**, on the **GENERAL** panel, set your **Width, Height,** and **Depth**.

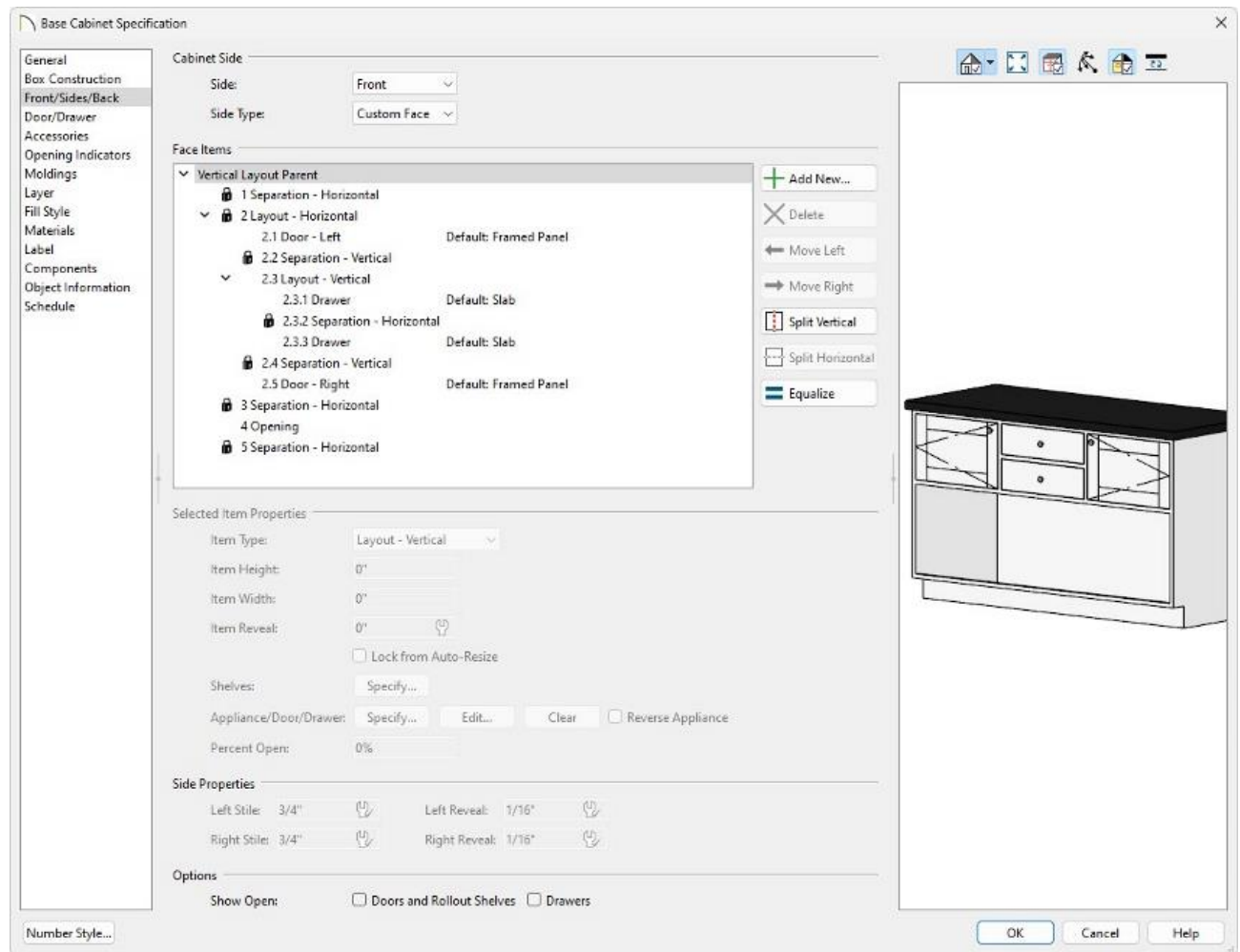
In this example, a Width of 60", a Height of 36", and a Depth of 24" are specified.

4. Remaining on the **GENERAL** panel uncheck the option for **Toe Kick**, if you are looking to make more of a table style vanity.
5. On the **BOX CONSTRUCTION** panel remove the bottom of the cabinet by selecting **No Bottom**.
6. Set your Door/Drawer Overlay to your desired overlay.

In this example, we will be using Inset.

7. On the **FRONT/SIDES/BACK** panel, customize the front to your desired door/drawer layout. If you'd like to create the layout shown in the picture above, please follow

these next steps:



- Select the **2 Drawer** face item from the Face Items list and select the **Split Vertical** button to split it into two drawers.
- Select either the **2.1 Drawer** or the **2.3 Drawer** face item and select the **Split Vertical** button to create three drawers.
- Select the **2.1 Drawer** face item located on the left side of the cabinet, and change its **Item Type** to **Door - Left**.
- Select the **2.5 Drawer** face item located on the right side of the cabinet, and change its **Item Type** to **Door - Right**.
- Select the **2 Layout - Horizontal** face item that contains your doors/drawers and click the **Equalize** button.
- With the **2 Layout - Horizontal** face item still selected, set the **Item Height** to the height your cabinet doors will be.

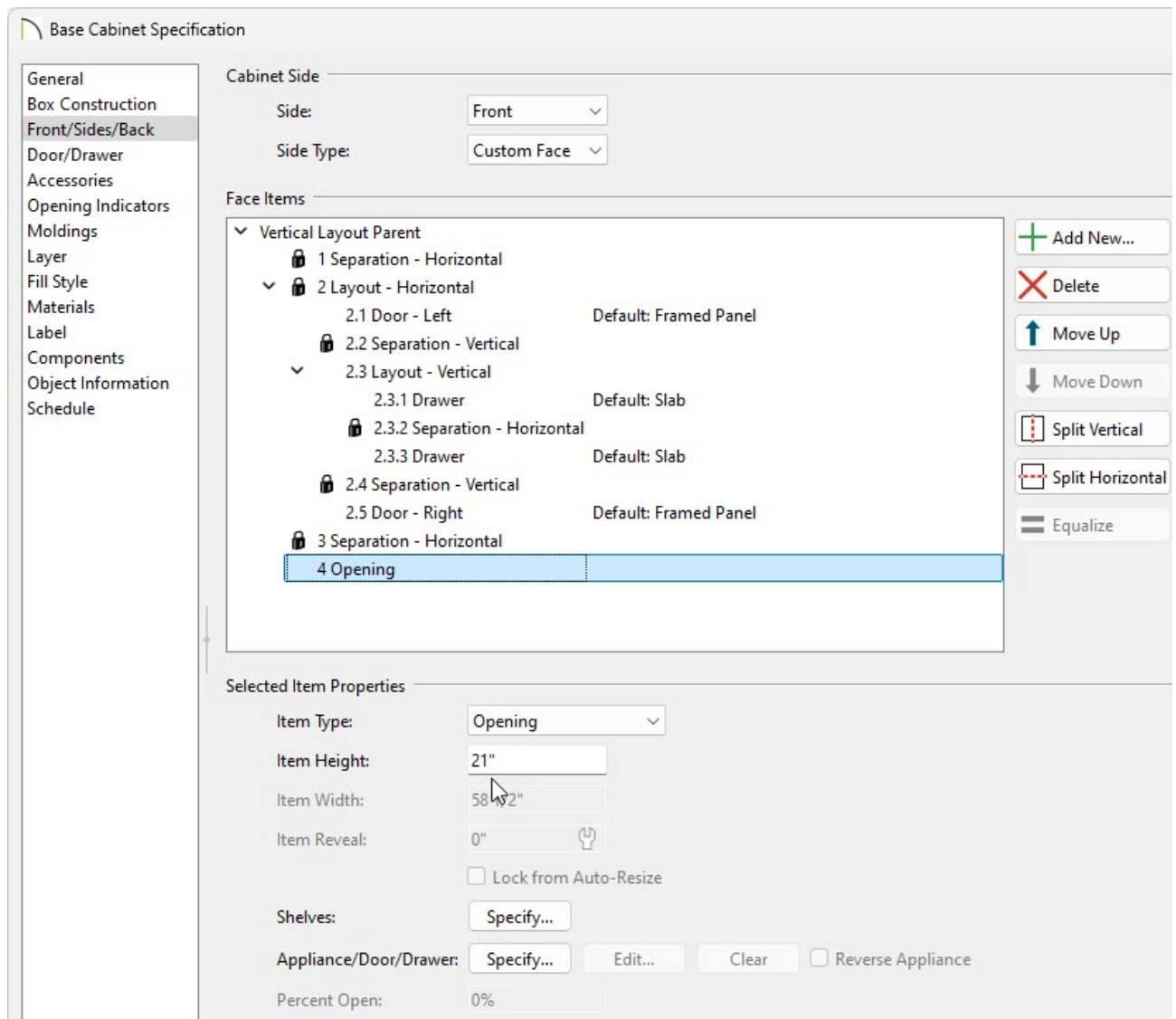
In this example, this is set to 12".

- Select the **2.3 Drawer** face item and click the **Split Horizontal** button to split it into two.
- Select the **4 Door - Auto Right** face item and change its **Item Type** to **Opening**.

For more information on customizing cabinet fronts please see the [Related Articles](#) at the bottom of this article.

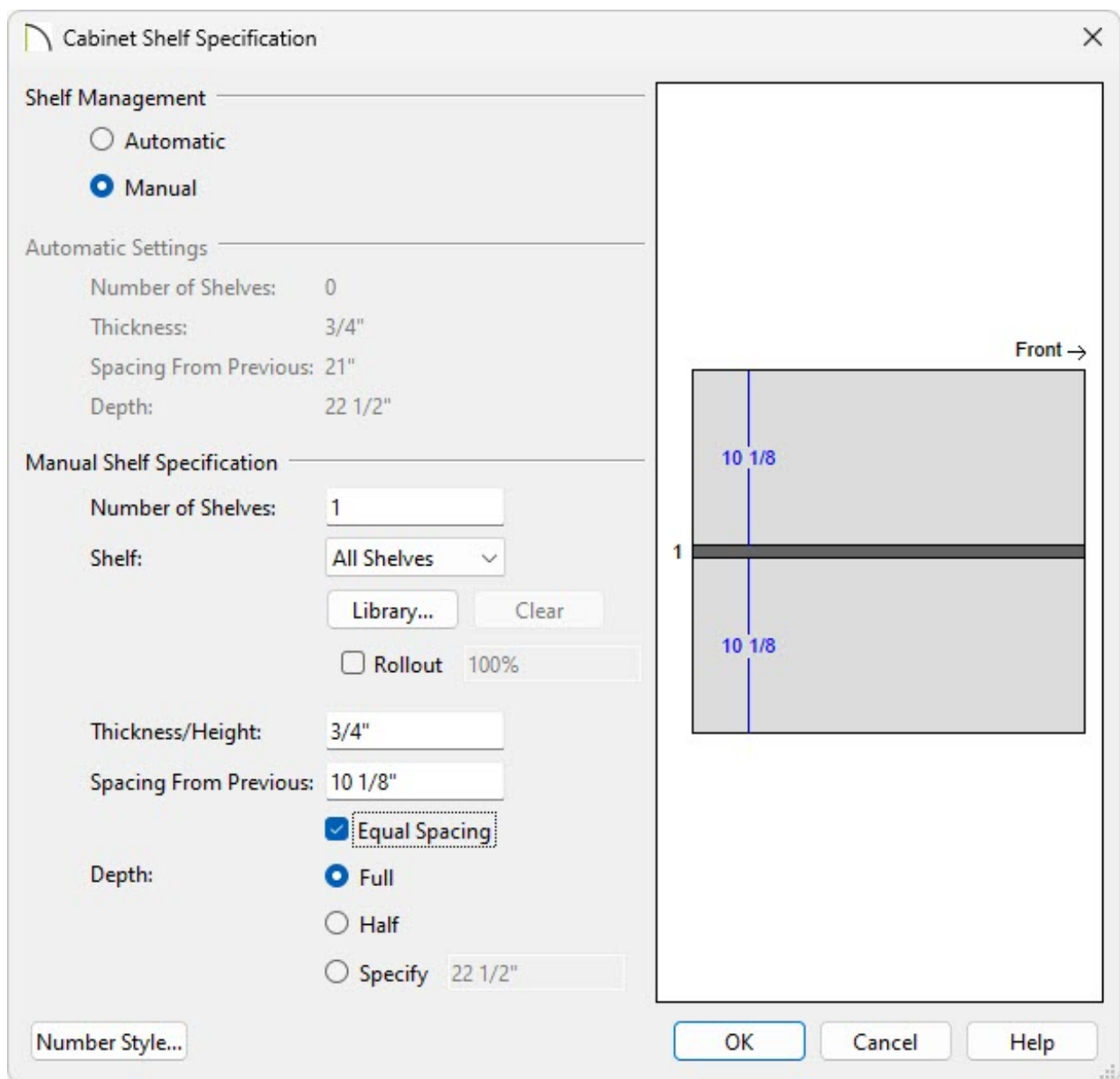
8. Once you have your desired cabinet layout, select the **5 Separation - Horizontal** face item, and click the **Delete** button.
9. Next, select the **4 Opening** face item and note the **Item Height**.

In this example, an Item Height of 21" is specified.



## To add a shelf into the opening

1. On the **FRONT/SIDES/BACK** panel, select the **4 Opening** face item and click the **Specify** button next to **Shelves**.
2. In the **Cabinet Shelf Specification** that displays, set your Shelf Management to **Manual**.
3. Underneath the Manual Shelf Specification section:



- Set your **Number of Shelves**.
- To change the shelf style, click on the **Library** button, and browse the library for a suitable shelf style.

In this example, the **Slatted Shelf - Short** shelf from the Core Library is being used. This can be found by clicking **Library** and going to **Chief Architect Core Catalogs > Architectural > Cabinet Doors, Drawers, & Panels > Specialty Storage > Slatted Shelf - Short**.

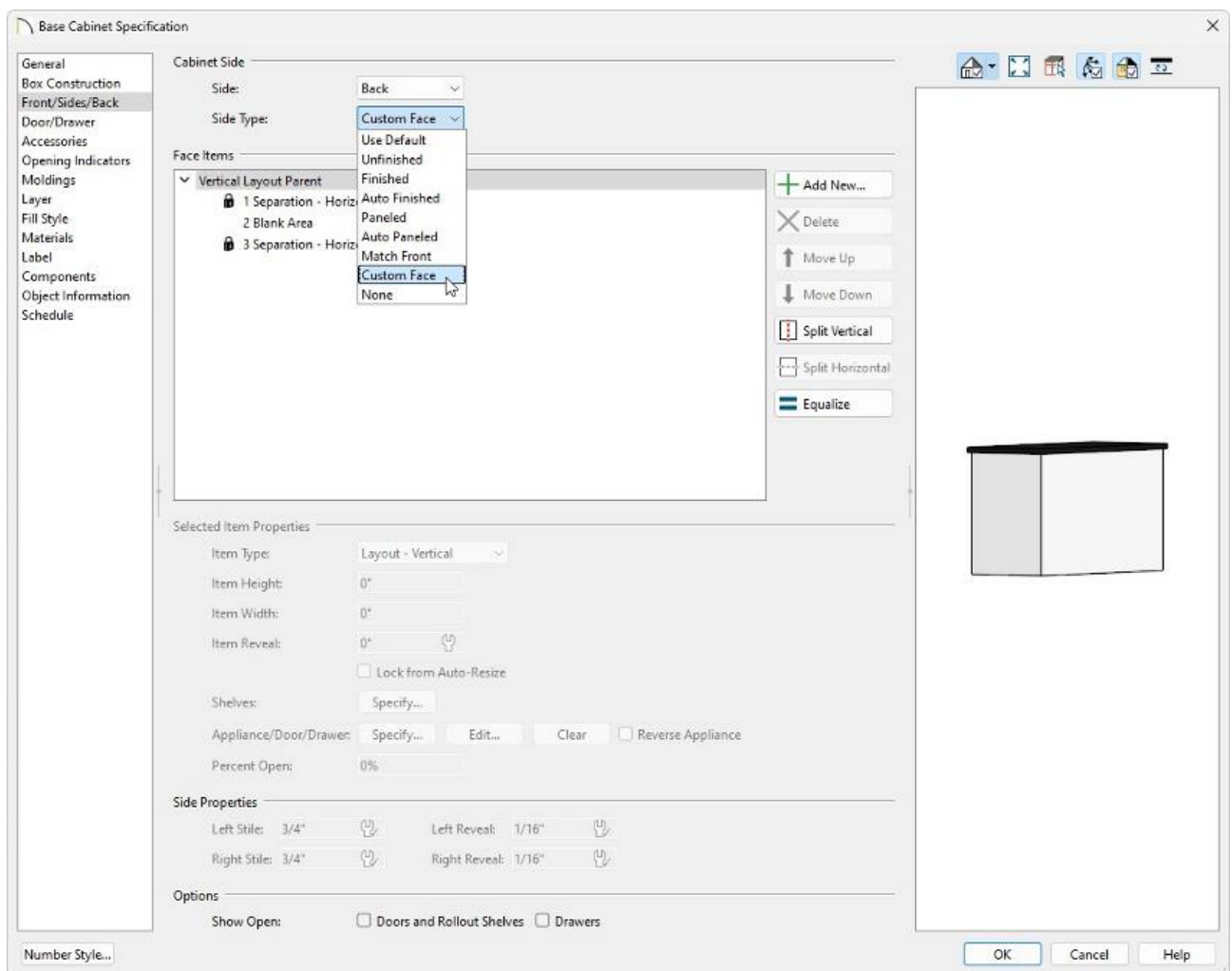
- Set the **Thickness/Height** of your shelves.
- Select **Full**, **Half** or **Specify** the shelf **Depth**.
- Adjust the **Spacing From Previous** to move the shelf within the opening.

- Once all desired changes have been made, click **OK**.

**Note:** For more information on adjusting shelving, please see the appropriate resource in the [Related Articles](#) below.

## To adjust the sides and back of the cabinet

1. On the **FRONT/SIDES/BACK** panel, change the **Side** to **Back**, and change the **Side Type** to **Custom Face**.

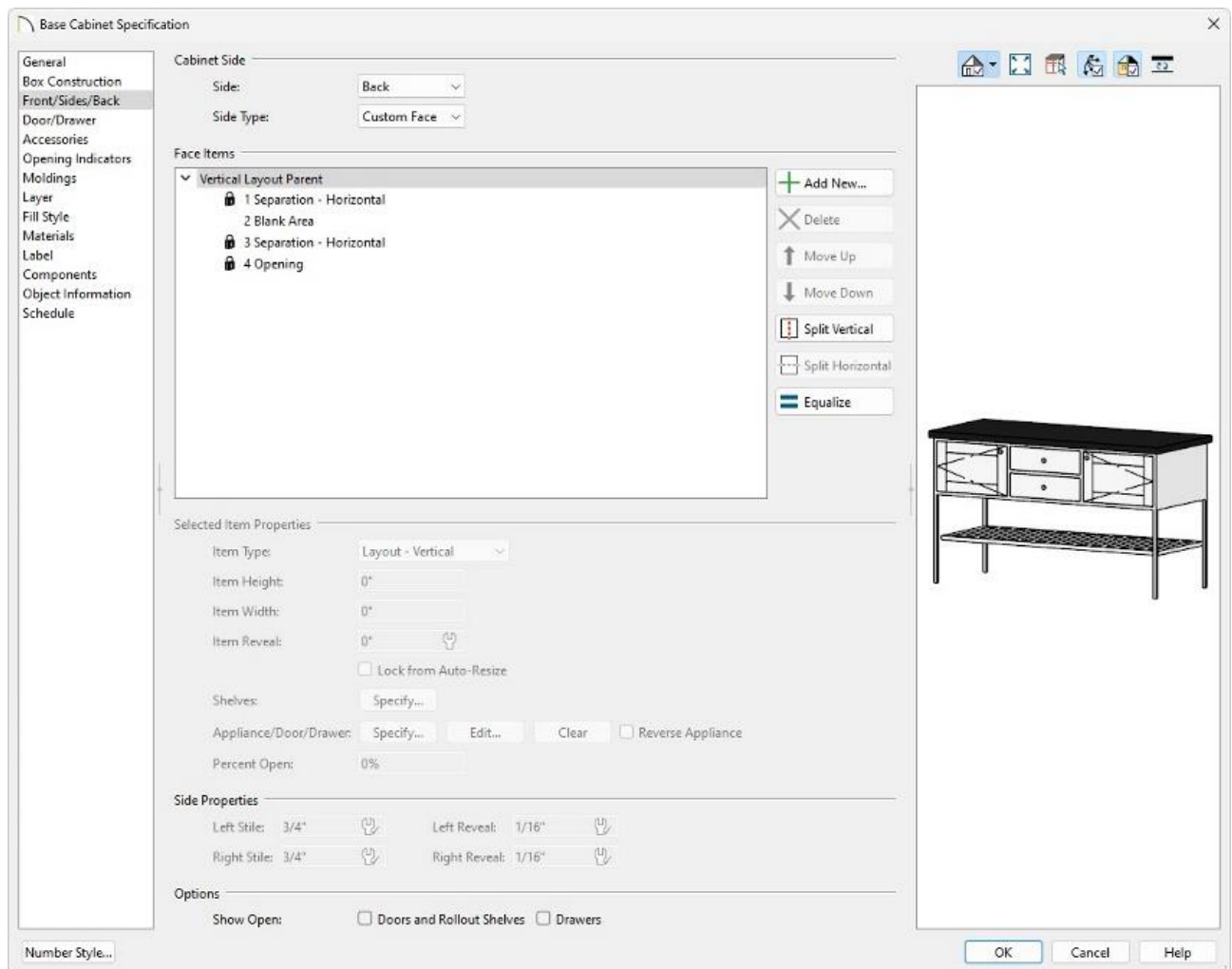


2. In the Face Items list, select the **2 Blank Area** face item and click the **Split Horizontal** button to split it into two.

- You will now have a **2 Blank Area** face item and a **4 Blank Area** face item. Select the lower **4 Blank Area** face item and change its **Item Type** to an **Opening**.
- Select the **4 Opening** face item and set its **Item Height** to the same as the opening on the front of the cabinet.

In this example, an Item Height of 21" is specified.

- Select the **5 Separation - Horizontal** face item, and click the **Delete** button.
- Change your **Side** to Left/Right, then repeat Steps 1 - 5.



Once you've designed your cabinet, you can save it to your User Catalog for future use. Please see the [Related Articles](#) for more information.



Related Articles

- [📄 Adding Feet to Cabinets \(/support/article/KB-03026/adding-feet-to-cabinets.html\)](/support/article/KB-03026/adding-feet-to-cabinets.html)
- [📄 Converting an Object into a Symbol \(/support/article/KB-00809/converting-an-object-into-a-symbol.html\)](/support/article/KB-00809/converting-an-object-into-a-symbol.html)
- [📄 Creating a Custom Cabinet and Adding it to the Library \(/support/article/KB-00446/creating-a-custom-cabinet-and-adding-it-to-the-library.html\)](/support/article/KB-00446/creating-a-custom-cabinet-and-adding-it-to-the-library.html)
- [📄 Designing Cabinet Fronts \(/support/article/KB-02945/designing-cabinet-fronts.html\)](/support/article/KB-02945/designing-cabinet-fronts.html)
- [📄 Editing Cabinet Shelf Attributes \(/support/article/KB-00787/editing-cabinet-shelf-attributes.html\)](/support/article/KB-00787/editing-cabinet-shelf-attributes.html)
- [📄 Replacing a Cabinet's Standard Shelves with Rollout Shelves or Drawers \(/support/article/KB-03142/replacing-a-cabinet-s-standard-shelves-with-rollout-shelves-or-drawers.html\)](/support/article/KB-03142/replacing-a-cabinet-s-standard-shelves-with-rollout-shelves-or-drawers.html)



[\(https://chieftalk.chiefarchitect.com/\)](https://chieftalk.chiefarchitect.com/)

 [\(/blog/\)](/blog/)



[\(https://www.facebook.com/ChiefArchitect\)](https://www.facebook.com/ChiefArchitect)



[\(https://www.youtube.com/user/ChiefArchitectInc\)](https://www.youtube.com/user/ChiefArchitectInc)



[\(https://www.instagram.com/chiefarchitect/\)](https://www.instagram.com/chiefarchitect/)



[\(https://www.houzz.com/pro/chiefarchitect/\)](https://www.houzz.com/pro/chiefarchitect/)



[\(https://www.pinterest.com/chiefarchitect/\)](https://www.pinterest.com/chiefarchitect/)

